



**CONTROLLED  
BOLTING  
EQUIPMENT**

---

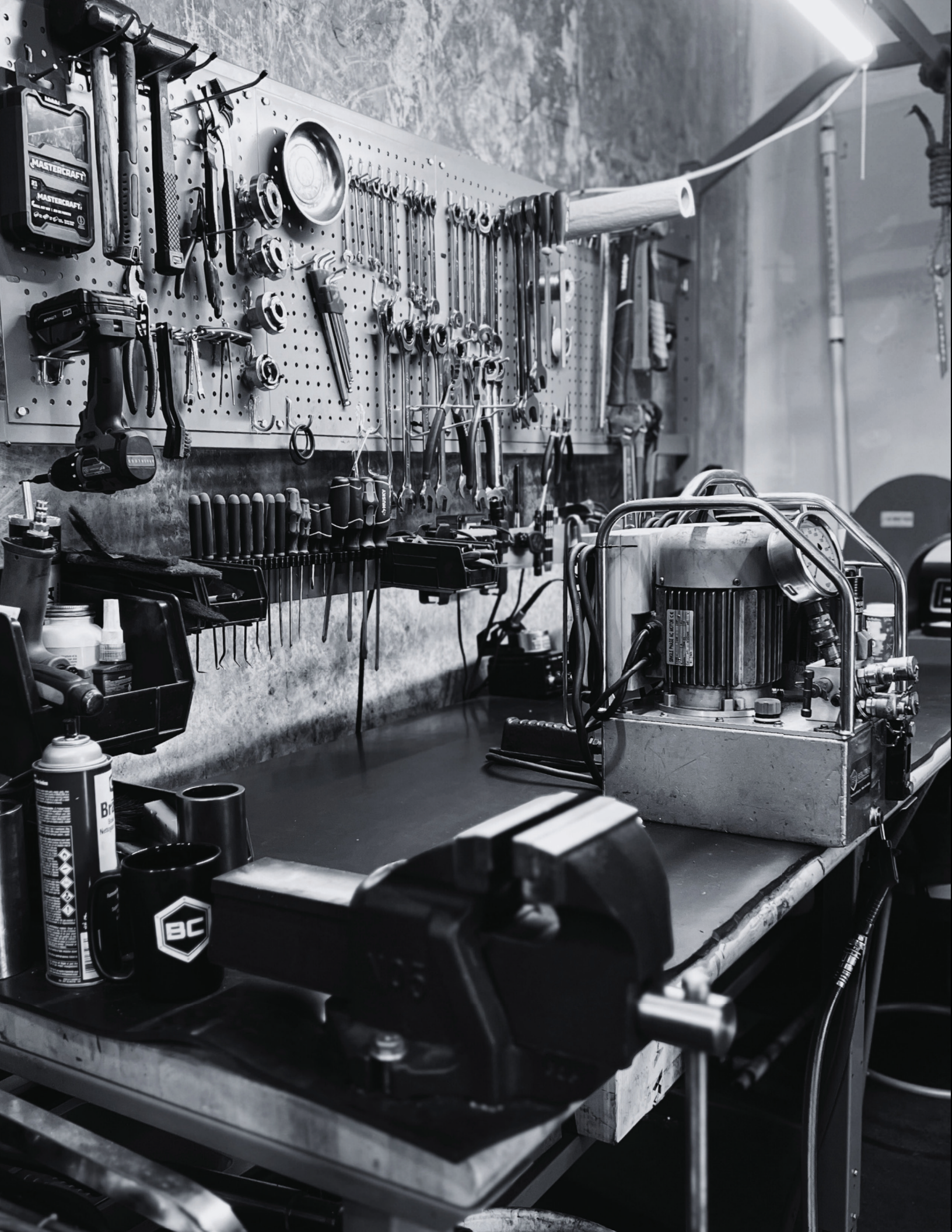


**SALES - RENTALS - SERVICE - CALIBRATION**

# CONTENTS

---

4	ABOUT US
5	RAD - PNEUMATIC SERIES
7	RAD - HIGH SPEED PNEUMATIC SERIES
9	B-RAD SELECT - BATTERY SERIES
11	B-RAD S - BATTERY SERIES
13	B-RAD X - BATTERY SERIES
15	B-RAD SELECT OFFSET
17	V-RAD SELECT - 115/230V
19	E-RAD BLU - 115/230V
21	MAXDRV - SQUARE DRIVE SERIES HYDRAULIC TORQUE WRENCHES
23	HEXPRO - LOW PROFILE HYDRAULIC TORQUE WRENCHES
25	ITH - BATTERY POWERED HYDRAULIC TORQUE WRENCH PUMP - 82V
26	ITH - HYDRAULIC TORQUE WRENCH PUMPS - 115/230V
27	CB115 PUMP
29	HI-FORCE - HYDRAULIC LIFTING CYLINDERS & PUMPS
31	OIL & GAS HYDRAULIC TENSIONING EQUIPMENT
33	WIND ENERGY HYDRAULIC TENSIONING EQUIPMENT
35	CDI - METAL HANDLE CLICK WRENCHES
36	CDI - COMPUTORQ DIGITAL TORQUE WRENCHES
37	RAD - CALIBRATION & TORQUE VALIDATION EQUIPMENT
39	AWS - HY SERIES STATIC CALIBRATION SYSTEMS
40	NORWOLF - CALIBRE BOLT LOAD MEASUREMENT SYSTEMS
41	BOLTING ACCESSORIES





# ABOUT US

---

Controlled Bolting Equipment offers a complete package of top-notch services. We're here to assist you with the purchase, rental, calibration, and maintenance of premium torque, tension, and lifting equipment. Boasting over 20 years of hands-on experience, we excel in equipping businesses with the utmost reliable and effective products the industry has to offer. Our swift local assistance ensures that every product is backed by our commitment to quality and customer support.

What makes us stand out is our exceptional set of tools and technical expertise. This empowers us to offer well-informed suggestions tailored to your specific application, environment, and your unique requirements. We're not just in the business of selling tools – we thoroughly analyze your situation to provide recommendations that prioritize the best solutions, whether they come from our product lineup or not.

# RAD GEN X DX SERIES PNEUMATIC GUNS

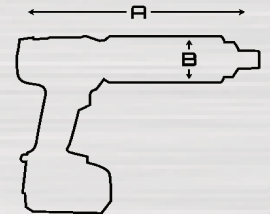
RAD'S Gen X and DX Series pneumatic guns provide the fastest, lightest, safest and most durable products on the market.

All RAD products are completely engineered and manufactured in British Columbia, Canada.



## FEATURES

- Fully adjustable stall type tools from 25-11,000 ft.lbs
- Zero hammering, impacting or ratcheting
- Ultimate durability - best in the industry
- Accuracy of +/-4% repeatability of +/-2%
- 100psi max. Low CFM requirements
- Zero force applied to operator



Part #	Model	Drive	Low ft.lbs	High ft.lbs	RPM	lbs	DB Level	DIM A	DIM B
12814	7GX	3/4"	100	700	30	8.0	80 db	9.0"	2.5"
12818	10GX	3/4"	200	1000	20	8.0	80 db	9.0"	2.5"
17328	15DX	1"	300	1500	10	8.6	80 db	8.0"	2.7"
12377	25GX	1"	500	2500	9	13.5	85 db	9.7"	3.1"
22238	30DX	1"	900	3000	8	14.8	85 db	10"	3.2"
12356	34GX	1" or 1.5"	1000	3400	12	20	85 db	12.5"	3.4"
20248	50DX	1.5"	1500	5000	6.7	23.5	85 db	11.25"	3.75"
15328	60DX	1.5"	2000	6000	6.6	27.6	85 db	13.7"	4.0"
18558	80DX	1.5"	2500	8000	4	30.5	85 db	12.15"	4.25"
26152	110DX	1.5"	4000	11000	3	42	85 db	13.9"	5"

# HIGH SPEED & WHEEL NUT TOOLING

RAD High Speed torque wrenches incorporate a precision engineered high-speed gearbox designed for faster run down and quick reaction point positioning on time sensitive bolting applications.

RAD planetary gear torque wrenches are vibration free and have the accuracy to prevent accidental under and over-tightening. The nose extensions are ideal for reaching wheel nut studs that are recessed and have tight clearances.



## FRL UNIT

- Low weight tool holder made from high-density polypropylene
- Includes pressure gauge, filter, regulator and oiler





## FEATURES

- The two-speed models feature a unique full automatic gearbox design, eliminating the time consuming switch between high and low speed gear

## RAD WHEEL NUT & OTR MINING FEATURES

- Removable custom reaction arms designed to fit virtually on any wheel configuration
- Extended reaction point for safe and quick operation
- Accuracy to ensure correct tightened wheels

Part #	Model	Drive	Low ft.lbs	High ft.lbs	RPM	lbs	DB Level	DIM A	DIM B	DIM C	DIM D
10644	10GX-2	0.75"	350	1000	85	9.9	80 db	10.3"	2.5"	2.75"	8.1"
17068	15DX-2	1.0"	500	1500	50	10.5	80 db	9.9"	2.7"	2.75"	8.1"
19773	25GX-2	1.0"	700	2500	44	16.6	80 db	12.0"	3.1"	3.3"	10.0"
24950	30DX-2	1.0"	1000	3000	49	16.1	80 db	12.2"	3.2"	2.75"	3.2"



### THE NOSE EXTENSION (-R)

Developed exclusively for extreme duty maintenance of mining haul trucks from 50-400 ton capacities and front-end loaders. The extended nose allows safe access of virtually all wheel configurations found on today's heavy equipment.



### THE NOSE EXTENSION KIT(-NX)

Designed with flexibility in mind. Complete with 3 different reaction arms and a nose extension for hard-to-reach areas, the NX Kit is a "go anywhere" tool capable of a variety of applications but especially suitable for off-road construction equipment.

Part #	Model	Drive	Low ft.lbs	High ft.lbs	RPM	lbs	DB Level	DIM A	DIM B	DIM C	DIM D	DIM E
13495	7GX-R	0.75"	300	700	115	12.0	80 db	14.5"	2.5"	2.0"	2.75"	9.0"
13691	10GX-NX	0.75"	200	1000	20	8.0	80 db	8.15"	2.5"	N/A	2.75"	8.07"
20810	15NDX-R	1.0"	300	1500	10	16.0	80 db	21.35"	2.7"	2.7"	2.75"	8.02"
19339	15DX-NX	1.0"	300	1500	10	8.6	80 db	8.0"	2.7"	N/A	2.75"	8.1"
13477	1800NGX-R	1.0"	500	1800	10	27.5	85 db	21.5"	3.0"	2.0"	3.3"	9.5"

Phone 604-392-2658

Fax 604-392-2659

Email

info@controlledbolting.ca

Website

controlledbolting.ca

# B-RAD SELECT BRUSHLESS TORQUE WRENCH

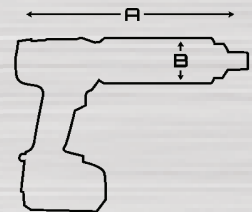
The newly designed B-RAD Brushless Select Series offers higher speed and longer battery life while incorporating a new digital torque display.

The new B-RAD series offers up to 5000Ft. lbs of torque with available 8.0Ah batteries for extended run time and performance. This patented product is engineered and manufactured in British Columbia, Canada.



## FEATURES

- Digital fully adjustable torque selector
- 5.2Ah Lilon Batteries (2 included) 8.0 Ah batteries available
- Accuracy of +/-5% repeatability of +/-2%
- Non-impacting continuous rotation
- Automatic reaction arm release
- Increased RPM battery life and performance
- Torque ranges up to 5,000 ft. lbs./ 7,000 Nm
- Suitable for bolting applications where electricity or compressed air are not available



Part #	Model	Range (ft-lb)	Max Speed (RPM)	Tool Weight (lb)	Dimension A	Dimension B	S Square Drive
28283	B-RAD 500	130 - 500	21.6	7.7	9.1	2.48	0.75
28285	B-RAD 1000	200 - 1000	10	7.7	9.1	2.48	0.75
28286	B-RAD 1000-2	200 - 1000	71	9.4	11	2.48	0.75
28287	B-RAD 1500	300 - 1500	6	8.9	9.6	2.7	1
28288	B-RAD 1500-2	300 - 1500	19.5	10.7	11.72	2.7	1
28289	B-RAD 3000	600 - 3000	3	13.3	11.2	3.18	1
28290	B-RAD 3000-2	600 - 3000	20	14.7	13.25	3.18	1
28291	B-RAD 5000	1000 - 5000	2.1	19.3	11.6	3.74	1.5

# B-RAD S

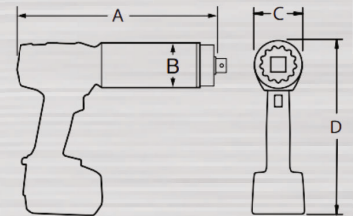
Equipped with a built-in transducer, the B-RAD S makes torquing and logging easier and more efficient than ever with its ability to read and display torque in real time.

With torque and angle capabilities, the B-RAD S is ready for the most critical applications and will hold up to scrutiny on a variety of projects.



## FEATURES

- Torque range up to 5,000 ft. lbs/7,000 Nm
- New and improved battery life
- Bolt counter
- Brushless motor
- Password protection
- User defined torque and angle rotation
- Bluetooth connectivity
- Automatic reaction arm release



Part #	Tool Model	Drive Size	Torque Low (Nm)	Torque High (Nm)	RPM	Weight (lbs)	Noise Level	Dimension A	Dimension B	Dimension C	Dimension D
31800	B-RAD S 500	0.75"	50	500	21	9.2	85	12.25"	2.48"	2.75"	10"
31802	B-RAD S 1000	0.75"	100	1000	9.6	9.4	85	12.25"	2.48"	2.75"	10"
31804	B-RAD S 1500	1.0"	150	1500	5.6	10.8	85	12.63"	2.7"	2.75"	10"
31806	B-RAD S 3000	1.0"	300	3000	3	15.9	85	13.25"	3.18"	3.18"	10.13"
31808	B-RAD S 5000	1.5"	500	5000	1.9	21.7	85	14.25"	3.74"	3.74"	10.5"

# B-RAD X

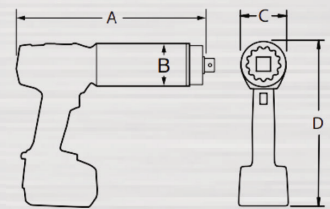
RAD Torque Systems are taking torque to the extreme with the all-new B-RAD X. The latest generation of our popular battery tool series, the B-RAD X is raising the bar for torque range capacity with a battery tool, maxing out at an impressive 11,000 ft. lbs./15,000 Nm – making the B-RAD X officially the most powerful battery-powered torque tool on the market.

The cordless B-RAD X gives companies better mobility to torque and tension large bolts with less equipment to haul.



## FEATURES

- Brushless DC motor for added durability and accuracy
- Redesigned anti-fatigue trigger switch
- Standard hand-guard for added operator protection
- Two-hand start options to prevent hand injuries
- Battery latch lock to protect batteries from falling
- 4-button interface with highcontrast LED display provides feedback during operation



Part #	Tool Model	Drive Size	Torque (FT.) Low	Torque (FT) High	RPM	Weight (lbs.)	Dimension A	Dimension B	Dimension C	Dimension D
30656	B-RAD X 5000	1.5"	500	5000	2.4	23	12.5"	3.75"	3.75"	14.25"
30658	B-RAD X 8000	1.5"	740	8000	1.7	30	13.75"	4.25"	4.25"	14.5"
30660	B-RAD X 11K	1.5"	1100	11000	1.2	42	15.25"	5"	5"	14.75"

Phone 604-392-2658

Fax 604-392-2659

Email [info@controlledbolting.ca](mailto:info@controlledbolting.ca)

Website [controlledbolting.ca](http://controlledbolting.ca)

# B-RAD SELECT OFFSET

The B-RAD Select Offset offers more flexibility for those tight spaces. The design is meant to allow the tool to get into spaces, specifically flanges, where there isn't enough overhead clearance for most pistol grip tools.

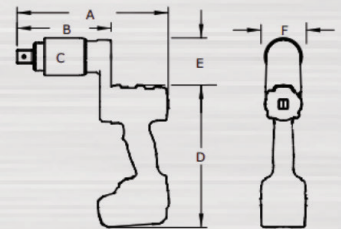
An excellent battery-powered alternative for flanges that only hydraulics could fit in.





## FEATURES

- Digital torque settings allow you to increase or decrease the value by 10 ft/lbs. (10 Nm)
- Torque ranges up to 5,000 ft/lbs. (7,000 Nm)
- Equipped with the latest lithium-ion technology
- Suitable for pre-torque and service jobs where electricity or compressed air are not available
- Accuracy of +/- 5% and repeatability of +/- 2%
- Longer battery life as energy is used more efficiently



Part #	Tool Model	Drive Size	Torque Low (ft.)	Torque High (ft.)	RPM	Weight (lbs.)	Dimension A	Dimension B	Dimension C	Dimension D	Dimension E	Dimension F
30002	B-RAD SELECT OFFSET 500	0.75"	130	500	21.5	8.7	10.2"	6.1"	2.5"	10.3"	3.3"	3.3"
29572	B-RAD SELECT OFFSET 1000	0.75"	200	1000	10.5	8.8	10.3"	6.1"	2.5"	10.3"	3.3"	3.3"
30004	B-RAD SELECT OFFSET 1500	1.0"	300	1500	6	9.9	10.9"	6.8"	2.7"	10.3"	3.4"	3.3"
30006	B-RAD SELECT OFFSET 3000	1.0"	600	3000	3	14.3	12.3"	8.2"	3.2"	10.3"	3.6"	3.3"
30008	B-RAD SELECT OFFSET 5000	1.5"	1000	5000	2.1	20.3	13.2"	9.1"	3.7"	10.3"	3.9"	3.3"

# V-RAD SELECT

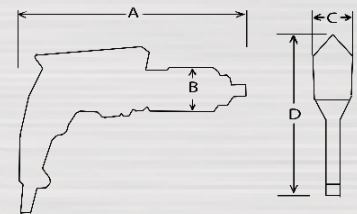
The V-RAD Select electric series is a new generation of electric torque wrench used for the installation or removal of heavy duty fasteners where accuracy, power and safety are required.

Achieve equal power in both forward and reverse directions while being able to utilize the quick adjust torque settings.



## FEATURES

- Torque ranges up to 3,000 ft/lbs (4,000Nm)
- Available in both 115V and 230V
- All tools include reaction arm, retaining ring, storage case, operations manual, and a calibration certificate with ISO 17025 accreditation



Part #	Tool Model	Drive Size	Torque (ft. lbs) Low	Torque (ft. lbs) High	RPM	Weight (lbs.)	Dimension A	Dimension B	Dimension C	Dimension D
25628	TOOL KIT V-RAD SELECT 1000	0.75"	100	1000	5.5	11	12.65"	2.5"	2.75"	8.65"
25629	TOOL KIT V-RAD SELECT 1500	1.0"	150	1500	5.5	12	13.5"	2.5"	2.75"	8.65"
25631	TOOL KIT V-RAD SELECT 3000	1.0"	300	3000	3.8	13.5	15.25"	3.2"	3.2"	8.65"

# E-RAD BLU

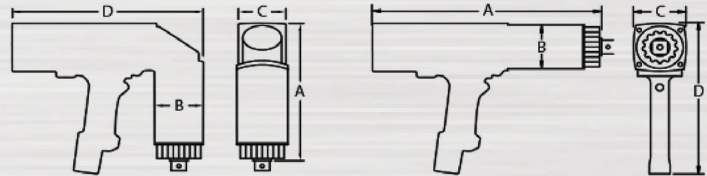
Built and designed for Heavy-Duty Industries. E-RAD BLU series precision torque wrench tools are designed to provide a high degree of accuracy ( $\pm 2.8\%$  on target) for high torque assembly applications.

RAD's patented and extremely advanced electronic pistol grip torque wrench combines the legendary RAD gearbox design and AC Servo motor technology to reduce bolting time up to 300% as compared to conventional hydraulic wrenches.



## FEATURES

- Multiple wrenches can be used in combination with one controller
- Bluetooth connectivity with RAD Smart Socket for transducer verified joint calibration
- Highly advanced Data Logging and Tool Management features
- Military grade single cable and connector system
- Available in 90 degree gearbox
- User defined torque and angle rotation



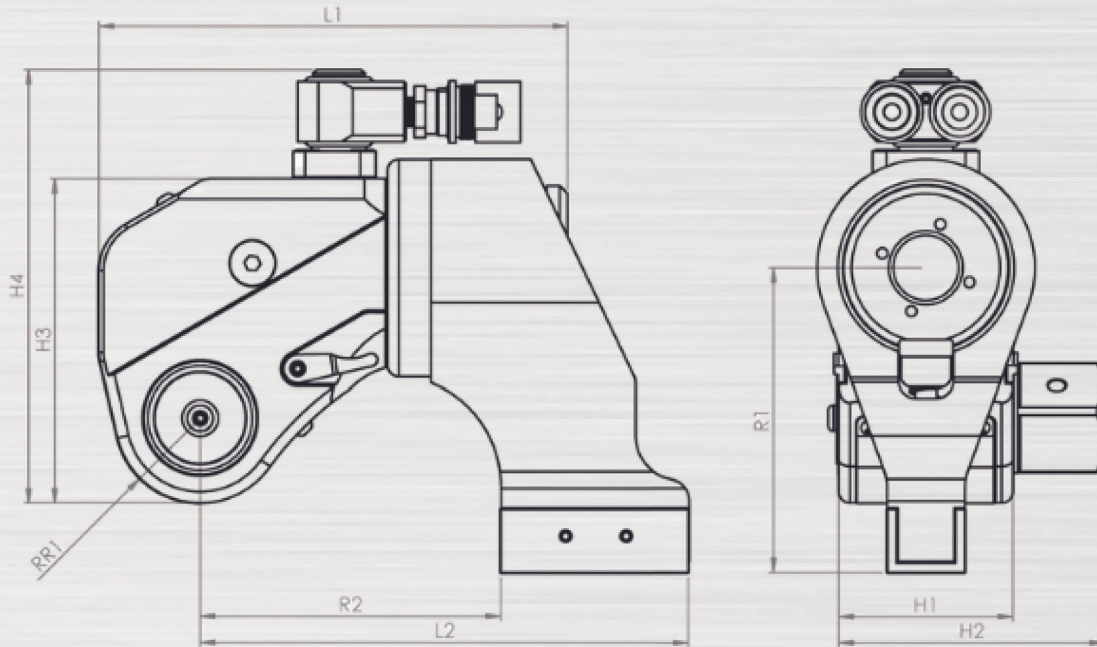
Part #	Tool Model	Drive Size	Torque (FT.) Low	Torque (FT) High	RPM	Weight (lbs.)	Dimension A	Dimension B	Dimension C	Dimension D
21980	E-RAD BLU 700	0.75"	100	700	20	12	13.25"	2.5"	3.0"	8.25"
24161	E-RAD BLU 1500	1.0"	200	1500	8	13	13.28"	2.7"	3.0"	8.25"
21981	E-RAD BLU 2500 COMP	1.0"	250	2500	5.5	18	14.8"	3.0"	3.0"	8.25"
24221	E-RAD BLU 2500 COMP - 90 Degree	1.0"	250	2500	6	18	9.65"	3.0"	3.1"	8.25"
21982	E-RAD BLU 3000	1.0"	500	3000	5.5	23.5	16.75"	3.4"	3.5"	8.75"
21983	E-RAD BLU 6000	1.5"	1500	6000	4	29	16.5"	4.0"	3.5"	8.75"
21984	E-RAD BLU 7500	1.5"	1500	7500	1.5	33	17.0"	4.25"	4.25"	9.14"
24234	E-RAD BLU 11K	1.5"	3000	11000	1.3	43	18.3"	5.0"	5.0"	12"
24234	*E-RAD BLU 15K	2.5"	3000	15000	1.3	45	18.3"	5.0"	5.0"	12"

\*Custom option please contact us

# MAXDRV SERIES SQUARE DRIVE TORQUE WRENCHES

MAXDRV™ Series Square Drive Torque Wrenches offer a compact design, constructed of aluminum-titanium alloy and super high-strength steel alloy for increased strength and durability while minimizing the weight. The MAXDRV™ Series is available in an 82 ft-lbs to 51,000 ft-lbs torque range.





**TorsionX** **MAXDRV**

Model	.7MD	1MD	3MD	5MD	10MD	17MD	25MD	35MD	50MD
Torque (Ft-lbs)	64-793	128-1282	325-3250	555-5552	1100-11,000	1,640-17,502	2455-24,500	3440-34,400	5100-51,000
Drive	.75"	.75"	1.00"	1.50"	1.50"	2.50"	2.50"	2.50"	2.50"
Weight	3.2 lbs.	5.5 lbs.	11 lbs.	17 lbs.	33 lbs.	61 lbs.	77 lbs.	110 lbs.	191 lbs.
L1 (inch)	3.90	5.74	7.07	8.36	9.74	10.85	12.82	14.79	15.88
L2 (inch)	5.08	6.89	9.09	10.74	12.6	14.20	15.92	18.48	20.49
H1 (inch)	3.32	1.99	2.70	3.18	3.97	4.63	5.44	6.07	6.35
H2 (inch)	1.62	2.86	3.77	4.88	5.64	6.98	7.94	8.58	8.85
H3 (inch)	2.56	3.81	5.04	5.92	7.23	8.50	9.81	11.20	11.55
H4 (inch)	3.02	5.20	6.99	7.90	9.21	10.36	11.79	13.18	13.54
R (inch)	4.29	3.63	4.9	5.56	7.07	7.82	9.05	9.67	10.24
R1 (inch)	1.50	1.03	1.35	1.55	2.02	2.32	2.62	3.06	3.22

Phone 604-392-2658

Fax 604-392-2659

Email

info@controlledbolting.ca

Website

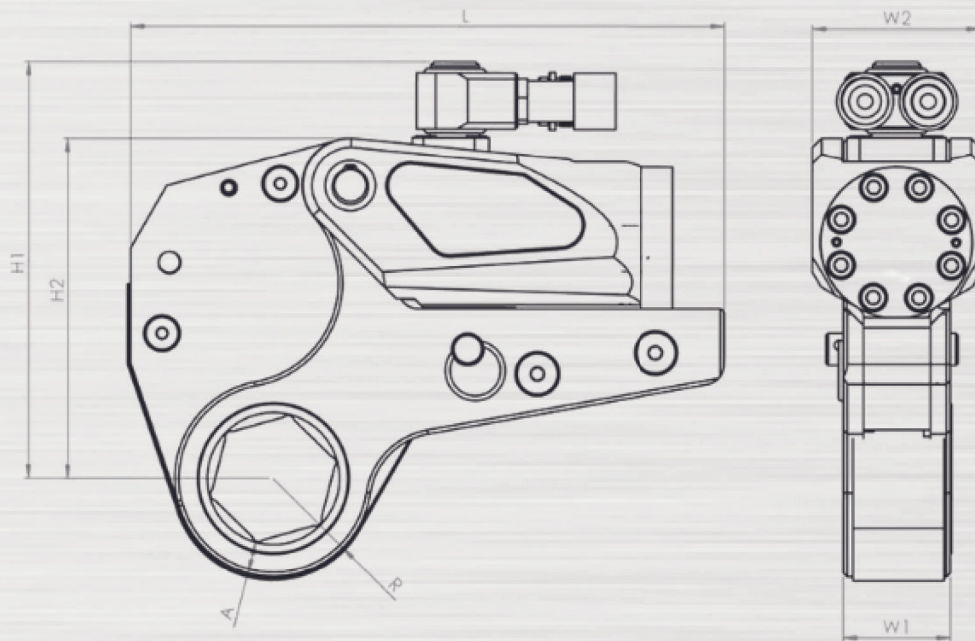
controlledbolting.ca

# HEXPRO SERIES LOW PROFILE WRENCHES

HEXPRO™ Series Low Profile Wrenches are essential tools for limited clearance applications. The versatile HEXPRO™ Series supports an extensive range of interchangeable hexagon ratchet links that deliver a torque range of 170 ft-lbs. to 30,500 ft-lbs.







**TorsionX** **HEXPRO**

Model	2HP		4HP		8HP		14HP		30HP	
Torque (Ft-lbs)	162 - 1,714		439 - 4,500		762 - 8,100		1,245 - 13,443		2,846 - 28,861	
Torque (Nm)	220 - 2324		595 - 6,101		11,033 - 10,982		1,689 - 18,229		3,858 - 39,130	
Hex Size (Imperial)	3/4" - 2.3/8"		1.5/16" - 3.1/8"		1.1/2" - 3.15/16"		2" - 4.5/8"		3.1/8" - 6.7/8"	
Hex Size (Metric)	19mm - 60mm		36mm - 80mm		41mm - 100mm		50mm - 100mm		80mm - 175	
Power Head	3 lbs	1.36 kg	5 lbs	2.27 kg	8 lbs	3.63kg	13 lbs	5.90 kg	27 lbs	12.27 kg
Ratchet Link	4 lbs	1.81 kg	9lbs	4.09 kg	16 lbs	7.27 kg	26 lbs	11.82 kg	70 lbs	31.82 kg
L	7.32"	185.9mm	9.72"	246.9mm	11.87"	301.5mm	14.24"	361.7mm	17.05"	433.1mm
H1	5.26"	133.6mm	7.85"	199.4mm	8.43"	214.1mm	9.41"	239.0mm	12.40"	315.0mm
H2	4.12"	104.7mm	5.71"	145.0mm	6.95"	176.5mm	8.00"	203.2mm	11.22"	285.0mm
W1	1.25"	31.8mm	1.65"	41.9mm	2.08"	52.8mm	2.52"	64.0mm	3.35"	85.1mm
W2	2.00"	50.8mm	2.60"	66.0mm	3.27"	83.1mm	3.88"	98.6mm	5.16"	131.1mm
A	.390"	9.9mm	.580"	14.7mm	.650"	16.5mm	.740"	18.8mm	1.010"	25.7mm
R	1.054" - 1.766"	26.8mm - 44.9mm	1.397" - 2.393"	35.5mm - 60.8mm	1.882" - 2.944"	46.3mm - 74.8mm	2.34" - 3.416"	59.4mm - 86.8mm	3.037" - 4.559"	77.1mm - 115.8mm

Phone 604-392-2658  
 Fax 604-392-2659

Email info@controlledbolting.ca  
 Website controlledbolting.ca

# ITH BATTERY PUMP

## FEATURES

- Mobile, fast pressure build up, independent from power supply - ideal for service jobs.
- For hydraulic torque wrenches or general purpose hydraulic jacks of all brands up to 850 bar (12,330 Psi).
- One battery load is capable of tightening 104 bolts
- Load sense technology manages power output efficiently
- 82V-5Ah batteries
- Supplied with (2) batteries and (1) 115V charger



ITH Hydro-DAX type	ITH order no.	Drive Power (kW)	Oil Volume L (Useable)	Oil flow rate LPV (L/min)	Oil flow rate HPV (L/min)	Noise Emission	Max Operating Pressure	Dimensions LxWxH	Weight (lbs)
V18 Battery	50.A1118-x	1.5	1.1 (0.8)	5.7	0.79	< 80	850 bar	11.8 x 14.9 x 15.5	45.2

# ITH HYDRAULIC PUMPS

## FEATURES

- For powering hydraulic torque wrenches with single-hose and dual-hose systems of all brands up to 850 bar (12.330 Psi)
- For powering general-purpose hydraulic jacks of all brands up to 850 bar (12.330 Psi)
- High performance pumps for increased speed and productivity



ITH Hydro-DAX type	ITH order no.	Drive Power (kW)	Oil Volume L (Useable)	Oil flow rate LPV (L/min)*	Oil flow rate HPV (L/min)*	Noise Emission	Max Operating Pressure	Dimensions LxWxH	Weight (lbs)
V12	50.01112-x-y	0.55	1.9 (1.4)	6.7	0.79	<80	850 bar	11.8 x 11.8 x 18.7	45.2
V18	50.01118-x-y	0.7	1.8 (1.4)	6.9	1.07	<80	850 bar	11.8 x 11.8 20.3	52.9
V21	50.01121-x-y	1.4	2.2 (1.6)	15.8	2.5	<85	850 bar	12.2 x 13.3 x 21.7	70.6

\*380 - 420 V Version

Phone 604-392-2658  
 Fax 604-392-2659

Email info@controlledbolting.ca  
 Website controlledbolting.ca

# CB115

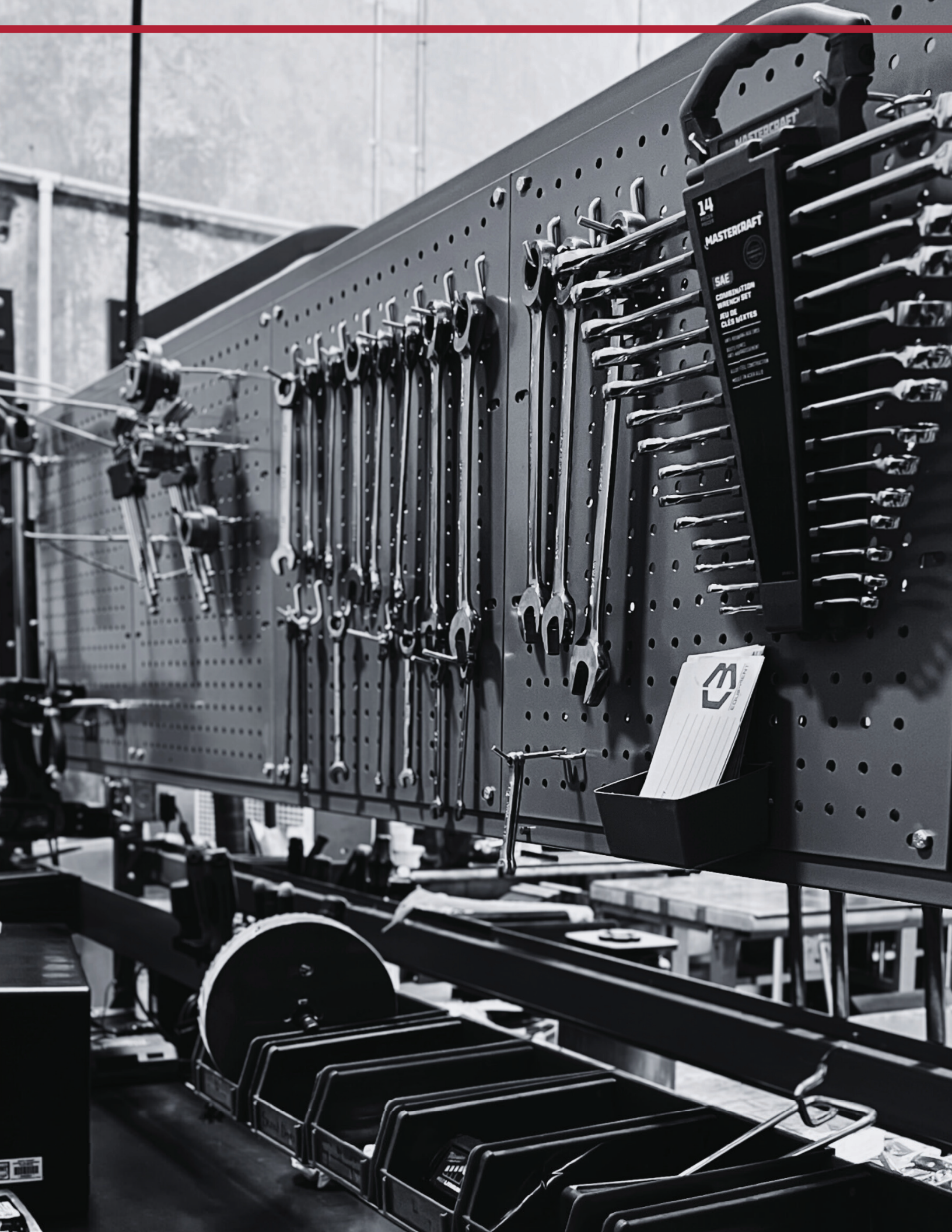
The CB115 offers a compact, 3-stage hydraulic torque wrench pump at an entry-level price point. With low amperage draw, these pumps are great for remote service work when operating with smaller generators on site. These low-maintenance pumps offer great value, performance, and longevity with local service and support.

## FEATURES

- State of the art inter-cooling system
- Pressure range 1,500 PSI to 10,000 PSI
- Calibrated 10,000 PSI liquid filled gage
- Dual tool manifold, heavy duty roll cage
- Oil site gauge and drain plug
- Heavy duty low voltage (24v) 20' remote
- "Easy to get to" pressure adjustment valve
- Also available in 220 volt



Model	Max Pressure (PSI)	Max Flow (cu/in)	Voltage (v)	Weight (lbs)	Remote Control Line (ft)	Dimensions LxWxH (inches)
CB115	50.A1118-x	1.5	1.1 (0.8)	5.7	0.79	< 80



14  
MASTERCRAFT  
SAE  
COMBINATION  
WRENCH SET  
JEU DE  
CLÉS MÈTRES

  
EQUIPEMENT  
INDUSTRIEL

# HI-FORCE HYDRAULIC CYLINDERS

## FEATURES

- Single & Double Acting Cylinders
- Nitrocarburized Pistons for Extended Life
- Low friction Bearing Surfaces
- Anti Extrusion Seals
- Spring Assisted Return
- Capacities from 5 - 1115 Tons
- Failsafe Lock Rings Available
- Overstroke Restriction
- Manufactured in the UK
- Manual / Pneumatic / Electric Pumps available





### HVL Low Clearance Cylinders

- Capacities from 11 to 115 tons
- Stroke Length .24"



### HPS Low Pad Cylinders

- Capacities from 5 to 162 tons
- Stroke Length .24" - .63"



### HLS Low Height Cylinders

- Capacities from 11 to 162 tons
- Stroke Length 1" - 2.36"



### HSS Low Height Cylinders

- Capacities from 2 to 220 tons
- Stroke Length 1" - 18"



### HHS Hollow Piston Cylinders

- Capacities from 12 to 112 tons
- Stroke Length 1" - 6" tons



### HHA Aluminum Hollow Piston Cylinders

- Capacities from 20 to 57 tons
- Stroke Length 2" - 4.14"



### HAS Aluminum Hollow Piston Cylinders

- Capacities from 20 to 57 tons
- Stroke Length 2" - 4.14"



### HFL Low Height Failsafe Lock Ring Cylinders

- Capacities from 55 - 573 tons
- Stroke Length 1.77" - 2"



### HFG Failsafe Lock Ring Cylinders

- Capacities from 55 - 115 tons
- Stroke Length 2 - 6"



### HP Manual Pump - Steel

- Two Stage Pump
- Working Pressure 10000 psi
- Multiple Sizes Available



### HP Manual Pump - Aluminum

- Two Stage Pump
- Working Pressure 10000 psi
- Multiple Sizes Available



### Electric Cylinder Pumps

- Two Stage Operation
- Working Pressure 10000 psi

# BOLT TENSIONERS STS IMPERIAL RANGE

The STS imperial bolt tensioner range is designed for topside operation in a wide variety of applications including pipeline flanges, heat exchangers, pressure vessels, compressor covers, boiler feed pumps, anchor bolts and many others.

The range comprises of 26 imperial size options ranging from  $\frac{3}{4}$ " to 4" stud diameter and all models are suitable for working pressures up to 21,750 psi.





# FEATURES

- Standard and spring return designs
- Single acting design
- Nitrocarburised piston
- Maximum piston stroke indicator
- Suitable for single or multi-tensioning applications
- Specially designed tensioners available on request
- User friendly operating and maintenance procedure
- Modular design for optimum versatility
- Dual quick connect couplings for easy connection
- Choice of electric, pneumatic or manual pumps available

**Hi-Force**  
HYDRAULIC TOOLS

Model no.	Bolt Thread Size	Threads Per Inch	Capacity (KN)	Capacity (Tonnes)	Effective Area inch <sup>2</sup>	Stroke inch	Weight lbs	DIMENSIONS (inch)					
								A	B	C Min	D	E	F
STS1-075B1	3/4"	10	234	26	2.42	0.39	3.7	2.92	1.10	2.92	3.55	1.77	2.01
STS1-087B1	7/8"	9	234	26	2.42	0.39	3.7	2.92	1.10	2.92	3.55	1.77	2.13
STS1-100B2	1"	8	234	26	2.42	0.39	3.7	2.92	1.18	3.15	3.86	1.77	2.40
STS1-112B2	1 1/8"	8	234	26	2.42	0.39	3.7	2.92	1.18	3.15	3.86	1.77	2.52
STS2-125B1	1 1/4"	8	457	51	4.73	0.59	7.7	4.02	1.54	4.06	5.04	2.13	2.92
STS2-137B1	1 3/8"	8	457	51	4.73	0.59	7.7	4.02	1.54	4.06	5.04	2.13	3.03
STS2-150B1	1 1/2"	8	457	51	4.73	0.59	7.7	4.02	1.54	4.06	5.04	2.13	3.15
STS3-162B1	1 5/8"	8	822	92	8.49	0.59	13.4	5.24	1.85	4.53	5.91	2.21	3.62
STS3-175B1	1 3/4"	8	822	92	8.49	0.59	13.4	5.24	1.85	4.53	5.91	2.21	3.66
STS3-175B2	1 3/4"	8	822	92	8.49	0.59	13.4	5.24	1.97	4.61	6.11	2.21	4.10
STS3-187B1	1 7/8"	8	822	92	8.49	0.59	13.4	5.24	1.85	4.53	5.91	2.21	3.82
STS3-187B2	1 7/8"	8	822	92	8.49	0.59	13.4	5.24	1.97	4.61	6.11	2.21	4.10
STS3-200B2	2"	8	822	92	8.49	0.59	13.4	5.24	1.97	4.61	6.11	2.21	4.10
STS4-187B1	1 7/8"	8	1264	142	13.07	0.59	23.4	6.42	1.97	4.69	5.87	2.25	4.10
STS4-200B1	2"	8	1264	142	13.07	0.59	23.4	6.42	1.97	4.69	5.87	2.25	4.10
STS4-200B2	2"	8	1264	142	13.07	0.59	23.4	6.42	2.44	4.69	5.87	2.25	4.18
STS4-225B2	2 1/4"	8	1264	142	13.07	0.59	23.4	6.42	2.44	5.32	6.50	2.25	4.77
STS4-250B2	2 1/2"	8	1264	142	13.07	0.59	23.4	6.42	2.44	5.32	6.50	2.25	5.00
STS5-250B1	2 1/2"	8	1833	206	18.94	0.59	35.3	7.60	2.88	5.71	7.37	2.36	5.28
STS5-275B1	2 3/4"	8	1833	206	18.94	0.59	35.5	7.60	2.88	5.71	7.37	2.36	5.52
STS5-300B1	3"	8	1833	206	18.94	0.59	35.3	7.60	2.88	5.71	7.37	2.36	5.79
STS6-300B1	3"	8	2649	298	27.37	0.59	51.8	9.18	3.31	7.01	8.51	2.52	6.34
STS6-325B1	3 1/4"	8	2649	298	27.37	0.59	51.8	9.18	3.31	7.01	8.51	2.52	6.58
STS6-350B1	3 1/2"	8	2649	298	27.37	0.59	51.8	9.18	3.31	7.01	8.51	2.52	6.78

Phone 604-392-2658

Fax 604-392-2659

Email [info@controlledbolting.ca](mailto:info@controlledbolting.ca)

Website [controlledbolting.ca](http://controlledbolting.ca)

# WIND TENSIONING



## ELECTRIC HYDRAULIC PUMP ECO-MAX 17



- Manual shut-off valve
- Manual Control of hydraulic pressure
- Robust design for service and assembling jobs
- External multi range motor
- Ideal for on-site use and with a generator



## HYDRAULIC BOLT TENSIONING CYLINDER



- Slim design for limited clearance
- Patented safety features including cycle counter, safety handle, and safety fracture device
- For bolted connections of M16 (5/8") and up
- Foundation and blade bolt tensioners



## BOLTIGHT TYPHOON TENSIONERS

**BOLTIGHT™**

- Designed for high loads - up to 95% yield stress for 10.9 bolts
- High cycle/fatigue life
- Spring return
- Durable coating on all components
- Joint misalignment compensation
- Internal fail safe mechanism



## BOLTIGHT FOUNDATION TENSIONERS

**BOLTIGHT™**

- 1500 bar
- Economy, Custom Nut and Split Nut types available
- Corrosion resistant finish
- Integrated body and bridge



# METAL HANDLE CLICK TYPE TORQUE WRENCHES

## FEATURES

- Dual scale
- Positive lock with spring loaded pull down lock ring
- Fast, accurate and easy to set. Easy-to-read laser marked scales
- Most feature quick release buttons which provide good socket retention as well as easy socket removal
- Accuracy +/-3% CW +/-4% CCW of indicated value, CW, from 20% to 100% of full scale
- Individually serialized with matching certificate of calibration traceable to N.I.S.T.



Product Code	Drive Size	English Range	Incr.	Nm Range	Incr.	A In.	B In.	C In.	D In.	Wt. Lbs
501MRMH	1/4"	10 - 50 in. lb.	0.5	1.4 - 5.4 Nm	0.5	10.15	1.06	0.93	1.06	0.85
1501MRMH	1/4"	20 - 150 in. lb.	5	2.8 - 15.3 Nm	0.12	10.15	1.06	0.93	1.06	0.90
1502MRMH	3/8"	20 - 150 in. lb.	1	2.8 - 15.3 Nm	0.12	10.15	1.06	0.93	1.06	0.90
2002MRMH	3/8"	30 - 200 in. lb.	1	4.0 - 22.0 Nm	0.12	10.15	1.06	0.93	1.06	0.85
2502MRMH	3/8"	30 - 250 in. lb.	1	4.0 - 27.7 Nm	0.12	11.25	1.06	0.93	1.06	0.95
7502MRMH	3/8"	100 - 750 in. lb.	5	14.1 - 81.9 Nm	0.6	16.00	1.43	1.20	1.40	2.50
10002MRMH	3/8"	150 - 1000 in. lb.	5	19.8 - 110.2 Nm	0.6	16.00	1.43	1.20	1.40	2.50
25003MRMH	1/2"	300 - 2500 in. lb.	10	39.6 - 276.9 Nm	1.2	18.00	1.70	1.40	1.40	3.20
752MFRMH	3/8"	5 - 75 ft. lb.	0.5	10.2 - 98.3 Nm	0.7	16.00	1.43	1.20	1.40	2.50
1002MFRMH	3/8"	10 - 100 ft. lb.	0.5	16.9 - 132.2 Nm	0.7	16.00	1.43	1.20	1.40	2.55
1503MFRMH	1/2"	20 - 150 ft. lb.	1	34 - 197 Nm	1.4	19.00	1.70	1.40	1.40	3.15
2503MFRMH	1/2"	30 - 250 ft. lb.	1	47 - 332 Nm	1.4	24.40	1.70	1.40	1.40	3.15
4004MFRMH	3/4"	80 - 400 ft. lb.	5	85 - 491 Nm	3.4	34.25	2.50	2.10	1.40	10.30
4504MFRMH	3/4"	75 - 450 ft. lb.	5	119 - 593 Nm	3.4	34.25	2.50	2.10	1.40	10.30
6004MFRMH	3/4"	100 - 600 ft. lb.	5	169 - 779 Nm	6.8	42.00	2.50	2.00	1.15	11.85
10005MFRMH*	1"	200 - 1000 ft. lb.	5	305 - 1322 Nm	6.8	70.00	3.00	3.00	1.50	25.10
20005MFMHSS**	1"	300 - 2000 ft. lb.	10	N/A	N/A	108.50	3.15	4.25	1.65	48.75

\*Note: 10005MFRMH supplied with one extension handle and is packed in a metal box.

\*\*Note: 20005MFMHSS (English scale only) supplied with two extension handles, fixed/non-ratcheting head and is packed in a cardboard box.

**CDI TORQUE**  
PRODUCTS

# COMPUTORQ 3 ELECTRONIC TORQUE WRENCHES

## FEATURES

- 15-degree flex ratcheting head
- Push button socket release head
- Large, easy to read digital display
- Long battery life, uses 2 each CR123 lithium batteries
- Ergonomically designed molded non slip rubber grip
- Torques in both clockwise and counterclockwise directions
- Battery saving auto-shutoff after two minutes
- COMPUTORQ 3 remembers last unit and torque setting selected
- Audible tone sounds when set torque value is reached, an alarm tone will sound if set torque exceeded
- 3-colour LED light bar
  - YELLOW LED** indicates approaching desired torque setting
  - GREEN LED** indicates desired torque value is reached
  - RED LED** indicates fastener was overtorqued, loosen & retighten
- When desired torque value is reached, display will hold value and flash for ten seconds
- COMPUTORQ 3 will operate in any of four torque units, foot pounds (ft.lbs.), inch pounds (in. lbs.) newton meter (Nm), or kilogram centimeter (kg. cm.)



### Accuracy

- +/-2% CW of readings from 20% to 100% of full scale
- +/-3% CCW of readings from 20% to 100% of full scale
- N.I.S.T. traceable certificate of calibration included

Product Code	Drive	Ft. Lb.	In. Lb.	Nm	Kg. Cm.	Length In. (mm)	Wt. Lbs. (kgs)
2401C13	1/4"	2.0 - 20.0	24 - 240	2.71 - 27.10	27.6 - 276	15 (381)	2.0 (.91)
1002CF3	3/8"	10.0 - 100.0	120 - 1200	13.6 - 135.6	138 - 1382	17 (432)	2.2 (1.0)
2503CF3	1/2"	25 - 250	300 - 3000	33.8 - 338	345 - 3456	27 (686)	3.5 (1.59)

\*Torque and Angle Available

Phone 604-392-2658

Fax 604-392-2659

Email [info@controlledbolting.ca](mailto:info@controlledbolting.ca)

Website [controlledbolting.ca](http://controlledbolting.ca)

# RAD CALIBRATION EQUIPMENT

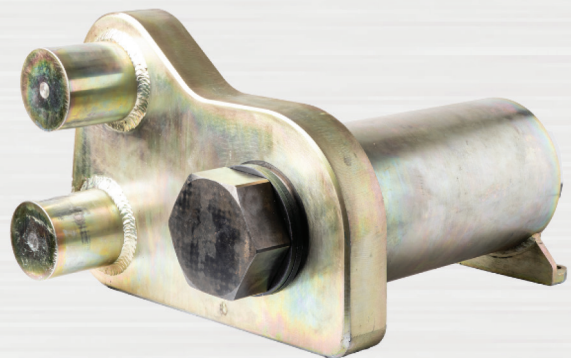
The RAD Calibration Systems have earned their place in calibration laboratories worldwide because of their high accuracy and repeatability.

All RAD transducers are engineered, manufactured and calibrated in Abbotsford British Columbia to the highest quality and standards.

## LARGE CALIBRATION STAND

Available in 2 different sizes

- 12,000 ft. lbs/16,000 Nm
- 18,000 ft. lbs/24,000 Nm



Redesigned for the bigger RAD tools, the new Large Calibration Stands operate up to 18,000 ft. lbs./16,000 Nm. Featuring a rundown fixture designed and produced to accurately calibrate RAD tools over 7000 ft. lbs./ 24,000 Nm.

## TRANSDUCER FEATURES

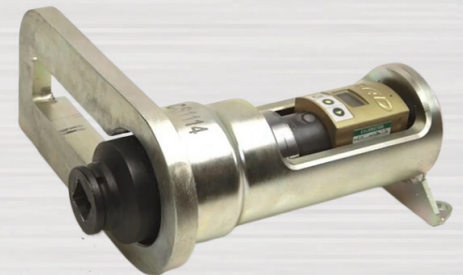
- Ranges up to 7,000 lbs.
- Screen on calibrator allows for convenient reading
- Connect to RAD Calibration Software via your computer or tablet
- RAD calibration systems are classified to BS 7882:2008 as Class 1 or better for the primary range (+/-0.5% of reading from 20% to 100% of full scale)
- Backward compatible with previous RAD Calibration benches



Part #	Description	Torque (Ft.) Low	Torque (Ft.) High	Drize Size	Weight (lbs.)
23442	RAD 1500 Transducer	75	1500	1.0"	4.0
23443	RAD 3500 Transducer	175	3500	1.5"	10.0
23444	RAD 7000 Transducer	350	7000	1.5"	11.0

## RAD SMART SOCKET™ FEATURES

- Measures and displays peak torque
- Built-in rechargeable battery
- "Pass" or "Fail" indication function
- Data logging – download logs (XLS, CSV, PDF)
- Free software included
- Full traceability of bolted joints
- Optional: Tablet, SDM calibration bench



Phone 604-392-2658

Fax 604-392-2659

Email

info@controlledbolting.ca

Website

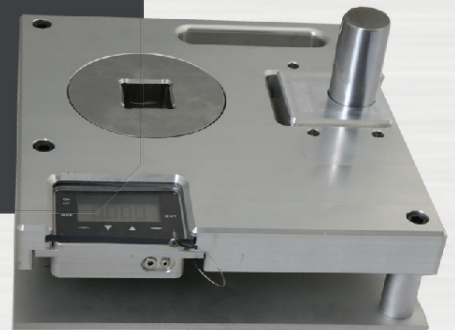
controlledbolting.ca

# AWS-HY SERIES STATIC CALIBRATION SYSTEMS

The AWS-HY series test stands are designed for the testing of hydraulic wrenches and cassette type hydraulic wrenches from 50 - 50,000 ft. lbs. System accuracy is  $\pm 0.5\%$  of indicated reading, top 95% of range, which satisfies metrology lab requirements while the robust features of these stands enables use in the harshest environments.

## FEATURES

- Accurate and durable transducer
- Solid machined aluminum plate for weight reduction and long term durability
- Steel reaction posts inserted into drill bushing or custom reaction plates to provide flexible torque reaction points
- Test stand is internally torque accepting so stand is not required to be bolted down
- Standard configuration is for test stand to be supplied with internal torque display
- 25 - 50,000 ft. lbs. range





# CALIBORE BOLT TENSION CALIBRATORS

The Calibore bolt tension calibrator is designed to load test all bolts using the following tools: Impact Wrench, Manual Torque Wrench, Nut-runner, Pneumatic Torque Wrench, Hydraulic Bolt Tensioner, Hydraulic Torque Wrench, Torque Multiplier, Missing Link, DTI Squirters, and TC break-off bolts.

## STANDARD FEATURES

- "Snap-in" front plate and hex bushing
- Built in adjustable reaction bar
- Gauge reads in both pounds and kilo Newton's
- Solid, heavy-duty gauge protector
- Solid milled clamp that secures at two points for beam mounting
- Drilled holes provided for base / table mounting
- Label identifying recommended minimum bolt tension
- Fitted, wheeled carrying case
- Light weight (basic unit weighs 17.5 lbs compared to competitions 45 lbs.)
- Available in 350k lb model and 1,000k lb model



# BOLTING ACCESSORIES

We carry a variety of products to accomplish your bolting needs. Including Backup Wrenches, Pop-It Flange Spreaders, Flange Alignment Pins, OZAT Impact Sockets, Striking Wrenches and complete tool sets.

We cater to the diverse demands of bolting tasks across various industries. If there is any accessory you need, please give us a call.



## BACKUP WRENCHES



- 1 - 1/4" to 5 3/4" available
- Embedded Magnets
- Zero hammering required - No sparks

## FLANGE ALIGNMENT PINS



- 3/8" to 3/5/8" Diameter
- Standard extra long pins available

## POP-IT FLANGE SPREADERS



- 10,000 lbs and 30,000 lbs units available
- Mechanical operation - No pump required
- Complete kits with safety chocks

## OZAT IMPACT SOCKETS & TOOLING



- Large inventory available rental/purchase
- Load rated sockets
- Specialty sockets available



## **Controlled Bolting Equipment**

**302 - 43881 Progress Way, Chilliwack, BC**

**Phone** 604-392-2658

**Email**

[info@controlledbolting.ca](mailto:info@controlledbolting.ca)

**Fax** 604-392-2659

**Website**

[controlledbolting.ca](http://controlledbolting.ca)